

List of components

Valid for all pumps in sizes: ABQ 100, 110, 125 & 140; Rotor diameter and generation L5/N5/P5
 With version codes: I } R } Y } P } The version code is composed of the letters in the 4 columns
 Also valid for pump option A020 & A561
 Example of pump designations std: ABQ 100N5 IRYP
 option: ABQ 140P5 IRYP A561

Pos No	Denomination	Qty	Components included in Spare parts sets:							Note	
			G011	G020	G041	G050	G053	G054	G057		G070
1010	Power rotor	1	x					x		x	
105	Plug	1	x					x		x	
105A	Ball	1	x					x		x	
114	Tension pin	2	x					x		x	
115	Thrust washer	2	x					x		x	
116	Thrust washer	2	x					x		x	
117	Locking ring	2	x					x		x	
201	Idler rotor	2	x					x		x	
301	Sleeve	2		x						x	
303	Distance ring	1		x						x	
308	Pin	2/4		x						x	
308A	Nut	2/4		x						x	
308B	Washer	2/4		x						x	
314	Screw	4		x						x	2
315	Screw	18		x						x	1
315	Nut	4		x						x	2
315A	Locking washer	8		x						x	2
315B	Washer	18		x						x	1
330	Flange	1		x						x	2
331	Screw	4		x						x	2
332	Washer	4		x						x	2
375	Bush	2			x					x	
377	Set screw	2			x					x	
380	Thrust balancing cover	2								x	
382	Screw	8								x	
383	Washer	8								x	
401	Pump body	1									
451	Stud bolt	16/18									
452	Nut	16/18									
455	Stud bolt	8									
456	Nut	8									
463	Plug	1									
463A	Washer	1				x	x	x			
464	Plug	2									
464A	Washer	2				x	x	x			
464C	Washer	1				x	x	x			3
466	Cover	1									
466A	O-ring	1				x	x	x			
467	Screw	6									
467A	Washer	6									
501	Top cover	1									
504	Screw	4									
506	Joint	1				x	x	x			
507	Bottom ring	1			x	x	x			x	
509A	Sealing bush	2			x	x	x			x	
509C	Rubber ring	2			x	x	x			x	
509D	Washer	2			x	x	x			x	
509E	Spring	1			x	x	x			x	
510	Seat	1			x	x	x			x	
511	Gland	1			x	x	x			x	
511A	Joint	1			x	x	x			x	
511C	O-ring	1			x	x	x			x	
536	Eye bolt	2									
537	Deaeration plug	1									

Pos No	Denomination	Qty	Components included in Spare parts sets:								Note
			G011	G020	G041	G050	G053	G054	G057	G070	
537A	Washer	1					x	x	x		
537B	Plug	1									
537C	Washer	1					x	x	x		
601	Valve cover, upper	1								x	
602	Joint	1					x	x	x	x	
605	O-ring	1					x	x	x	x	
606	Valve cover, lower	1								x	
607	Joint	1					x	x	x	x	
608	Valve spindle	1								x	
6120	Regulating nut	1								x	
613	Pin	1								x	
6140	Valve piston	1								x	
615	Spring	1						x		x	
621	Hand wheel	1								x	
622	Nut	1								x	
622A	Key	1								x	
623	Plate	1								x	
636	Chock valve incl in 6140	2/3								x	
655	Guiding washer	1								x	
656	Guiding socket	1								x	
657	Spring	1								x	
658	Distance sleeve	1								x	

Notes:

- 1) Valid for size 100
- 2) Valid for size 110-140
- 3) Valid for size 110

Explanations:

A020: Surface-treated cast iron pump bodies.
 A561: Pump including heating device
 G011: Rotor set
 G020: Sleeve element
 G041: Rear bearing element
 G050: Shaft seal
 G053: Minor kit (G050+G057)
 G054: Major kit = G050+G057+G011+Item 615
 G057: Joint kit
 G070: Valve element
 G090: Pump element

Old designation

ABQ 100-3 DN5M
 ABQ 110-3L DN5M/Y
 ABQ 125-3 DN5M 561A

Current designation

ABQ 100N5 IRYP
 ABQ 110L5 IRYP A020
 ABQ 125N5 IRYP A561

Also valid for older generations of pumps

ABQ 110-140 DN3M:
 All parts, except item 401 pump body and valve parts items 601-658 are applicable.
ABQ 100-140 DN4M:
 All parts, except item 401 pump body are applicable.
ABL DN3B (foot mounted version):
 Parts included in G041 and G050 are applicable.

***Spares of ABQ sizes 100-125 were available up to end of year 2003. After that date only the spare parts sets G050 & G057 will be available for sale at least up to the end of 2017.**

Ordering code

Pos No	Spare parts (set)	Part numbers for pump size				Note
		100	110	125	140	
G050	Shaft seal	116210	116228	116236	116244	1
G057	Joint kit	183749	183756	183764	183772	
506	Gasket - Joint	021501	021683	021865	021865	
509C	Rubber ring	012906	012989	012989	013060	
511A	Gasket - Joint	011486	011494	011494	011502	
6140	Valve piston	051250	--	--	--	2

Notes:

- 1) Not valid for pump option A020.
- 2) See note (at the bottom of page 83) regarding availability of components.

Recommendation:

For maintenance the following spare part sets are recommended:

Set: To be used:

G057 Joint kit

For dismantling of the pump.

G053 Minor kit

For service

Ordering example:

For IMO-pump ABQ 100N5 IRYP

Serial number 345678

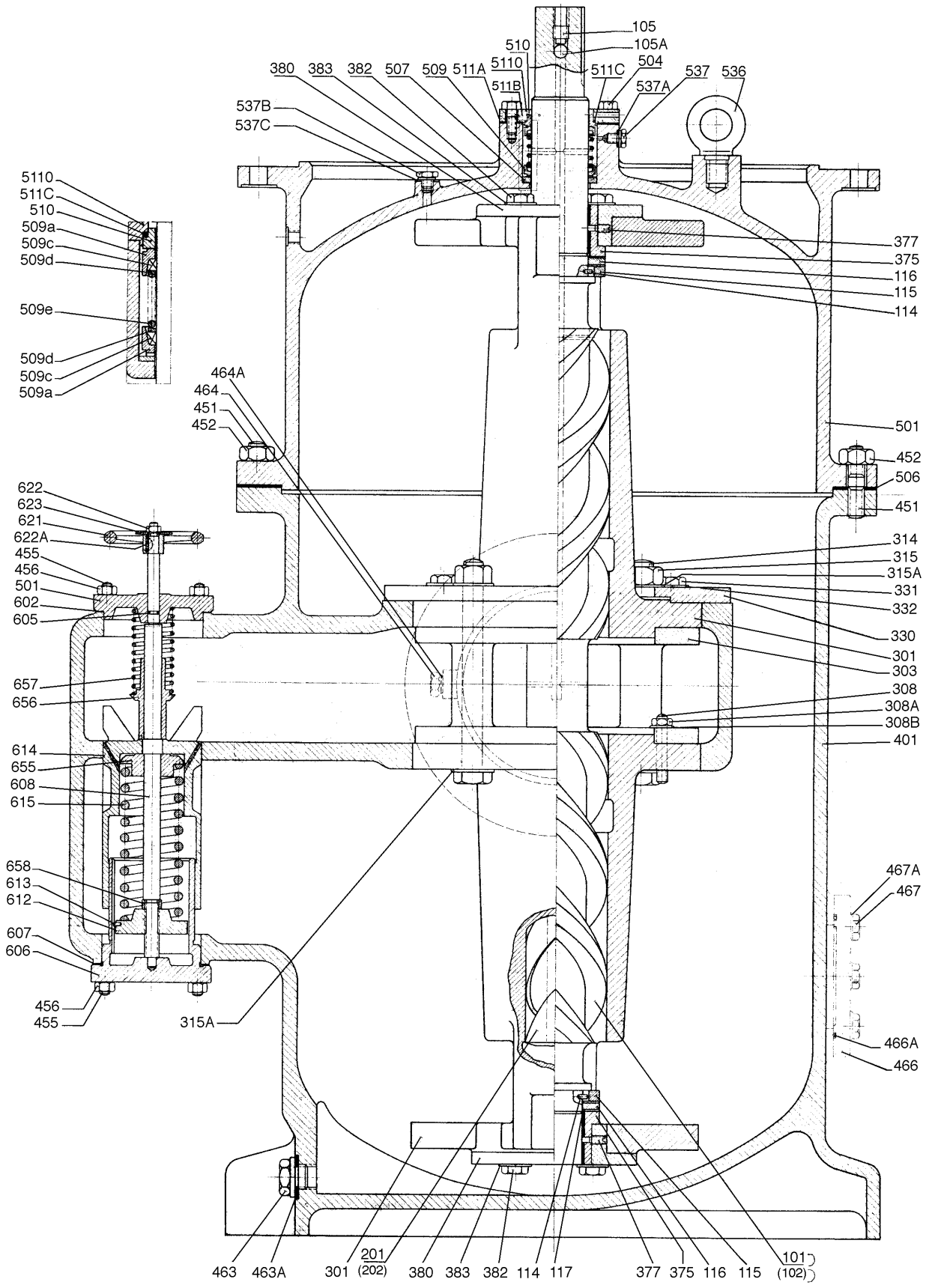
Shaft seal G050 p/n 116210

ABQ Size 100-140 pumps

Obsolete product - spares available up to end of 2003 (140: 2005)*



Spare parts book
September 2016



*Spares of ABQ sizes 100-125 were available up to end of year 2003. After that date only the spare parts sets G050 & G057 will be available for sale at least up to the end of 2017.