

List of components

Valid for all D6 pumps, size 038/045/052/060/070. Rotor lead and Generation: K3/N3

With version codes: S } R } B } Y } The version code is composed of the letters in the 4 columns

T } F } Z } Also valid for: Pump option A101, A309.

V } J } Example of pump designation std: D6 038N3 STBZ

T } option: D6 045K3 STBZ A101

Pos no	Denomination	Qty	G011	G012	G050	G053	G054	G057	G102	Note
101	Power rotor (CCW)	1	x				(x)			
102	Power rotor (CW)	1		x			x		x	
1030	Return valve	1	x	x			x		x	
113	Key	1	x	x			x		x	
120	Distance washer	1	x	x		x	x	x	x	1
122	Ball bearing	1				x	x	x	x	
123	Locking washer	1				x	x	x	x	2
124	Bearing nut	1				x	x	x	x	2
124	Retaining ring	2				x	x	x	x	1
124A	Support ring	1				x	x	x	x	1
139	Balancing ring	1	x	x			x		x	
139A	Shaft nut	1	x	x			x		x	1
139B	Washer	1	x	x			x		x	1
201	Idler rotor	2	x				(x)			
202	Idler rotor	2		x			x		x	
376	Balancing bush	2	x	x			x		x	
382	Screw	4								4
391	Plate	1								4
395	Supporting plate	1							x	
395A	Screw	1							x	
401	Pump body	1							x	
423	O-ring	1								3
427	Split flange	2								3
427A	Pipe weld	1								3
428	Screw	4								3
428A	Washer	4								3
451	Screw	6							x	
451A	Washer	6							x	
453	Screw	4							x	
453A	Washer	4							x	
463	Plug	1							x	
463A	T-ring	1				x	x	x	x	
489	Strainer	1								3, 4
491	Nut	1								3
501	Front cover	1							x	
506	O-ring	1				x	x	x	x	
507	Support ring	1							x	
507A	Locking washer	1							x	
507B	Washer	1							x	2
509	Mechanical shaft seal	1			x	x	x		x	
514	Retaining ring	1							x	1
514A	Support ring	1							x	1
520	Cover	1					x		x	
520A	O-ring	1				x	x	x	x	
521	Screw	3							x	
521A	Washer	3							x	
521B	Shims	1							x	1
523	Distance washer	1							x	
523A	Spring	2							x	
523B	Shims	2							x	2
551	Inlet chamber	1								5
556	Gasket	1				x	x	x		

Explanations:

A101: Nonstandard rotation: CCW (counter clockwise) CW-rotation is standard)

A309: 1/4" NPT thread in pos.520 for drain

G011: Rotor set CCW-rotation

G012: Rotor set CW-rotation

G050: Shaft seal

G053: G050+G057

G054: G012+G050+G057+520

G057: Joint kit

G102: Pump element CW-rotation

Notes:

1) Valid for xxxY (external bearing)

2) Valid for xxxZ (internal bearing)

3) Valid for xxJx

4) Valid for xxTx

5) Valid for xxBx

Old/Current designation

D6E 038N3 D6 038N3 SVBY

D6F 045K3 D6 045K3 SRBZ

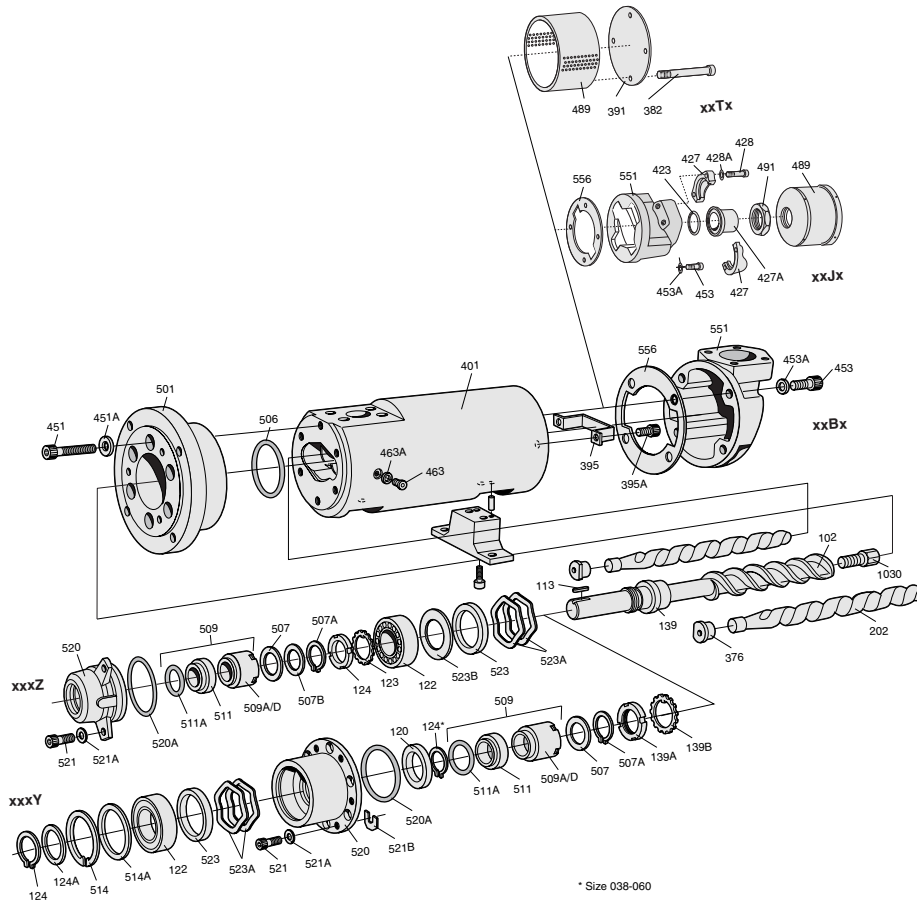
D6T 052N3 D6 052N3 SRTZ

D6H 060K3 D6 060K3 STFZ

Obsolete pumps:

Spares for obsolete pumps in versions N1 & N2, please contact IMO.

Exploded view



Ordering code

Pos No	Spare parts (set)	Part numbers for pump size					Note
		038	045	052	060	070	
G011	Rotor set CCW-rot	Contact IMO AB					
G012	Rotor set CW-rot	Contact IMO AB					
	D6 K3 xxxY K-lead	163048	163063	163089	163105	163121	
	D6 K3 xxxZ K-lead	162941	162966	162982	163006	163022	
	D6 N3 xxxY N-lead	163055	163071	163097	163113	163139	
	D6 N3 xxxZ N-lead	162958	162974	162990	163014	163030	
G050	Shaft seal xRxZ	120873	124610	134908	128728	164921	
	" xTxY				189455	192105	
	" xTxZ	172726	172049		168914	173047	
	" xVxY	159988	159855	159749	159541	159467	
	" xVxZ	190336	190338	190340	142299	168211	
G053	Minor kit = G050+G057						
G054	Major kit = G012(G011)+G050+G057+520						
G057	Joint kit xRxZ	185959	185967	185975	185983	185991	
	" xVxZ	189036	192009			189037	
	" xxxY	186007	186015	186023	186031	186049	
G102	Pump element CW-rot	Contact IMO AB					
122	Ball bearing xxxY	159996	159863	159756	017251	159459	
	" xxxZ	017194	107870	017244	110429	017269	
376	Balancing bush	158964	157701	156976	156828	156836	
506	O-Ring xRxx	016055	016071	016097	016113	016147	
	" xTxx,xVxx	016824	016840	016865	145060	016907	
520	Cover xxxY	159962	159822	159715	159525	159434	1
	" xxxZ	158923	157685	156943	156778	156539	
520A	O-ring xRxx	016071	016071	016113	016139	016154	
	" xTxx,xVxx	016840	016840	145060	117408	016915	
556	Gasket	121350	124040	124297	130815	131938	

Recommendations

Set: To be used:

G057 Joint kit

For dismantling of the pump.

G053 Minor kit

For normal scheduled inspection.

G054 Major kit, or pump element G102 (CW)

For repair after damage or greater wear.

Ordering Example:

For IMO-pump D6 038N3 STBZ
serial no: 234567
Rotor set G012
Part no 162958
Shaft seal G050
Part no 172726

Notes:

1) Not valid for A309