

### List of components

Valid for all D4 pumps, size 025/032/038/045/052/060/070. Rotor lead and Generation: K2/L2/N2

With version codes: I } R } B } E } The version code is composed of the letters in the 4 columns  
L } T } J } P } Also valid for pump options A056, A070, A101, A246, A329, A396  
Y } V } T } Example of pump designations std: D4 025L2 LVBE  
option: D4 038K2 LVBP A101

Pos No	Denomination	Qty	Mounting form											Note		
			G011	G012	G050	G053	G057	P.E.	xxBE	xxJE	xxTE	xxBP	inlet chamber G065			
101	Power rotor(CCW-rot)	1	x						(x)							
102	Power rotor(CW-rot)	1		x					x							
1030	Valve	1	x	x					x							
113	Key	1	x	x					x							
122	Ball bearing	1							(x)							14
124	Retaining ring	1							x							13
124A	Support ring	1							x							13
124B	Washer	1							x							13
139	Balancing washer	1	x	x					x							13
139A	Retaining ring	1	x	x					x							13
201	Idler rotor(CCW-rot)	2	x						(x)							
202	Idler rotor(CW-rot)	2		x					x							
205	Ball bearing	2														15
2080	Cup	2														15
376	Balancing bush	2	x	x					x							
382	Screw	4										x				7
391	Plate	1										x				7
395	Support plate	1							x							
395A	Screw	2							x							
401	Pump body	1							x							
423	O-ring	1									x					10
427	Split flange	2									x					10
427A	Weld stud	1									x					10
428	Screw	4									x					10
428A	Washer	4									x					10
451	Screw	4							x							
451A	Washer	4							x							
453	Screw	4								x	x		x			9
453A	Washer	4								x	x		x			9
455	Screw	4											x			2
463	Plug	1							x							5
463A	Washer	1					x	x	x							5
489	Strainer	1									x	x				8
491	Nut	1									x					1
497	Valve seat	1											x			11
497A	O-ring	1											x			11
501	Front cover	1							x							
506	O-ring	1					x	x	x							
507	Washer	1							x							
509	Shaft seal	1				x	x		x							
520	Cover	1							x							
520A	O-ring	1					x	x	x							
521	Screw	3							x							
521A	Washer	3							x							
551,5510	Inlet chamber	1								x	x		x			9
556	Gasket	1					x	x		x	x		x			9
557	Plug	1											x			11
601	Valve cover	1											x			11
602	Washer	1											x			11
605	O-ring	1											x			11
608	Valve spindle	1											x			6
608A	Retaining ring	1											x			3

Pos No	Denomination	Qty	Mounting form										Note	
			G011	G012	G050	G053	G057	P.E.	xxBE	xxJE	xxTE	xxBP		inlet chamber G065
608B	Valve spindle	1											x	4
608C	Nut	1											x	4
608D	Pin	1											x	4
609	Washer	1											x	2
609A	Screw	2											x	2
611	Washer	1											x	2
612	Regulating nut	1											x	12
614	Valve piston	1											x	11
615	Valve spring	1											x	11

**Explanations:**

A056: Ball bearing option

A070: Hydraulic motor

A101: Nonstandard rotation: CCW (counter clockwise) CW-rotation is standard)

A246: Combination of A056 + A101

A329: Pumps with "black-nite" treated balancingbushes in steel. Intended for heavily contaminated oils.

A396: Combination of A056 + A329

G011: Rotor set, CCW-rotation

G012: Rotor set CW-rotation (std)

G050: Shaft seal

G053: Minor kit (G050 + G057)

G057: Joint kit

G065: Inlet chambers

P.E.: Pump element G102 (CW) or G101 (CCW)

**Notes:**

- 1) Valid for sizes 025-060 xxJE
- 2) Only for xxBP size 060-070
- 3) Only for xxBP size 025-032
- 4) Only for xxBP size 038-052
- 5) Not for xxBP
- 6) Valid for xxBP size 025-032, 060-070
- 7) Valid for xxTE
- 8) Valid for xxTE, xxJE
- 9) Not for xxTE
- 10) Valid for xxJE
- 11) Valid for xxBP
- 12) Valid for xxBP sizes 025-052
- 13) Valid for sizes 025
- 14) Included in options A056 & A246
- 15) Included in option A070

**Old designation      current designations**

D4F 025N2	D4 025N2 LVBE
D4T 032L2	D4 032L2 LVTE
D4V 038N2	D4 038N2 LVJE
D4B 045K2	D4 045K2 LVBP
D4F 052N2 A056	D4 052N2 LVBE A056
D4F 060K2 A051	D4 060K2 LVBP
D4B 070N2 A060	D4 070N2 LVBP

**Obsolete pumps:**

D4 N1/K1/L1:

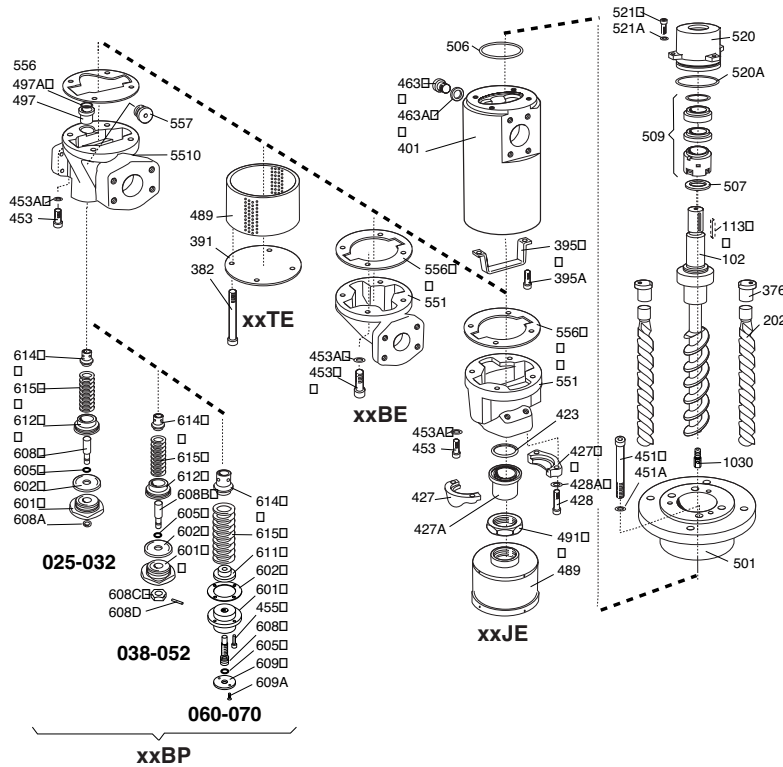
D4 N2/K2/L2 xRxx:

These pumps have been replaced by corresponding pump with viton shaft seal xVxx.

A D4 pump consists of: a pump element Gxxx + a inlet chamber G065 xx.

*Pumps with pump name "UD4" and with the same version codes are identical with these D4-pumps*

## Exploded view



**Please remember:**  
 D4 032N2 LVBE A056:  
 Pump incl Inlet chamber  
 D4 032N2 LVBE G056:  
 Pump element only  
 (excl Inlet chamber)  
 D4 032N2 LVBE:  
 Pump incl Inlet chamber  
 D4 032N2 LVBE G102:  
 Pump element only  
 (excl Inlet chamber)

## Ordering code

Pos No	Spare parts (set)	Part numbers for pump size							Note
		025	032	038	045	052	060	070	
G011	Rotor set CCW-rotation	Contact IMO AB							
G012	Rotor set K-lead CW-rot	--	--	146332	154534	186551	186577	186593	1
	" L-lead CW-rot	186544	156117	--	--	--	--	--	1
	" N-lead CW-rot	163410	150425	163428	166926	150433	186569	186585	1
G050	Shaft seal xRxx	128314	128314	120873	124610	124610	128728	128728	
	" xTxx	168906	168906	172726	172049	172049	168914	168914	
	" xTBE A329,A396	189339	189339	189340	189189	189189	189341	189341	9
	" xVxx	143859	143859	190336	190338	190338	142299	142299	
G053	Minor kit = G050 + G057								
G057	Joint kit xxxE	185819	185827	185835	185843	185850	185868	185876	2
G102	Pump element (LVBx)	(LVBx)	(LVBx)	(LVBx)	(LVBx)	(IVBx)	(IVBx)	(IVBx)	
	D4 LVBE G102 K-lead CW-rot	--	--	145391	154526	188274	188945	188491	7
	D4 IVBE G102 L-lead CW-rot	146092	146621	--	--	--	--	--	7
	" N-lead CW-rot	146670	144147	146639	158469	187609	178095	189104	7
	D4 LVBP G102 K-lead CW-rot	--	--	145300	146308	188733	189957	192005	7
	D4 IVBP G102 L-lead CW-rot	145524	159590	--	--	--	--	--	7
	" N-lead CW-rot	152637	146001	143586	144451	188226	188949	192229	7
Pump elements for other versions (xTxx) and options (G056,G070,G101,G246,G329,G396), please contact IMO AB.									
122	Ball bearing A056/A246	106922	106922	017137	107870	017228	110429	110429	2
376	Balancing bush	130245	128272	126987	123927	124172	128660	129023	2
	" A329, A396	--	186890	190544	186874	180257	188917	190866	
423	O-ring - inlet	016733	016758	016782	016816	016832	016865	016915	2
	O-ring - outlet	016733	016733	016758	016782	016816	016832	016832	2
489	Strainer xxJE	018796	019034	019323	019711	019992	117382	131961	2
	" xxTE	132621	132290	131094	124115	124362	130708	131953	2
497A	O-ring	144519	144519	016691	016717	016725	016758	016758	2
556	Gasket xxxE	132605	132134	121350	124040	124297	130815	131938	2
	" xxxP	139790	135988	136762	137083	137331	137539	139618	2
602	Washer xxxP	017871	017871	017889	137141	137141	137554	137554	2
605	O-ring xxxP	187922	187922	143602	088070	088070	144519	144519	2
615	Valve spring xxxP	136044	136044	136804	137133	137133	137596	137596	2
646	Gasket xxxP	135954	135954	139964	139972	139980	139998	139998	2,8

**For obsolete version D4 N1/K1/L1**

Pos No	Spare parts (set)	Part numbers for pump size								Note
		025	032	038	045	052	060	070		
G050	Radial seal in nitrile	108464	108464	131102	107680	107680	--	--	3	
	Shaft seal in nitrile (xRxx)	128314	128314	120873	124610	124610	128728	128728	4	
	" hard metal (xTxx)	168906	168906	172726	172049	172049	168914	168914	5	
	" in viton (xVxx)	143859	143859	190336	190338	190338	142299	142299	6	

**Notes:**

- 1) These rotor sets are not valid for pump options A056/G056 & A070/G070. For rotor sets for these pumps, please contact IMO. Refer also to IMO for CCW-rotor sets.
- 2) Also valid for obsolete pumps in forms N1/L1/K1.
- 3) Used for pumps D4 (F/T/V) x1 in sizes 025-052
- 4) Used for pumps D4 (F/T/V) x1 in sizes 060-070 , D4(F/T/V) x1 A072 in sizes 025-052, D4B x1 in all sizes
- 5) Used for pumps D4 (F/T/V) x1 A051 in all sizes, D4B x1 A060 in all sizes
- 6) Used for pumps D4 x1 A073 in all sizes
- 7) xx IVBE for sizes 052-070 xx IVBP for sizes 052-070
- 8) O-ring for obsolete D4 pumps with internal return. Replacement pumps with internal return have the designation A354. Please contact IMO.
- 9) For pumps xTBP A329, A396 are the standard xTxx shaft seals used.

**Recommendation:**

*Set: To be used:*

**G057 Joint kit**

For dismantling of the pump.

**G053 Minor kit**

For normal scheduled inspection.

**G102 (CW) or G101 (CCW) Pump element**

For repair after damage or greater wear.

**Ordering example:**

For IMO pump D4 025N2 LVBE serial no 456789:

Rotor set G012: Part no. 163410

Shaft seal G050: Part no. 143859

Pump(element)s in version 1 are obsolete. Deviating parts are the front cover item 501, rotorset G012 and in some cases also the shaft seal G050. For economical reasons, please order a new pump element in version 2 as replacement for old version 1 pumps. Please contact us if you have problems to identify which pump element you require.

**Assembly drawing**

